



# HIGH VOLTAGE BATTERY EDUCATIONAL TRAINER ON A TROLLEY

L3

Product number  
HYBBAT01

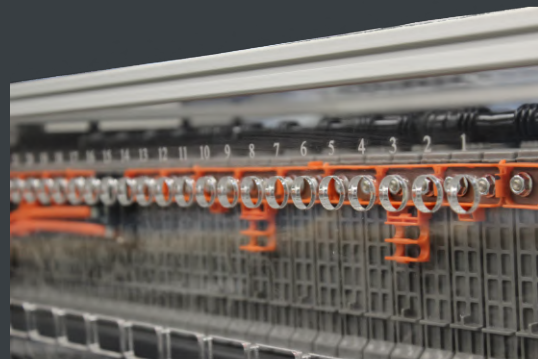


High Voltage Battery Educational Trainer provides a detailed understanding of the construction and operation of hybrid and electric vehicle high-voltage batteries. This advanced training stand incorporates OEM car parts, including battery cells, controllers, and control units, wiring making it ideal for technical and vocational automotive education.



## Features

- Incorporates OEM components including battery cells, controllers, and control units.
- Clear arrangement of components for easy understanding of high-voltage battery construction and operation.
- Includes a high-voltage disconnect fuse and service plug for safe demonstration and maintenance procedures.
- OBD 16-pin diagnostic connector for comprehensive ECU diagnostics.
- Switches for simulating various faults in the battery system to enhance diagnostic training.
- Monitors and controls battery charge levels, temperature, and current leakage.





## Values for teachers

- Ensures safe training with enclosed high-voltage units and protective measures, preventing accidental injuries.
- Uses OEM automotive parts for an authentic and practical learning experience. Students gets real experience with all parts and functions exact as in real cars.
- Compact and on wheels for enhanced mobility and efficient use of classroom space. Durable and light construction from solid aluminum frame to make it long lasting and safe to use. Closed panels ensures students safety and internal wiring makes it safe to use and ensures accidental damage to sensitive training stand parts.
- Allows detailed demonstration of high-voltage battery operation, management, and diagnostic procedures.
- Board on castors version, which is mobile and space saving in the classroom, allows concurrent use by multiple students, promoting collaborative learning and practical training opportunities.
- The training stand is designed for simplicity, requiring only small adjustments to reset to default parameters, making it easy to prepare and start each lesson quickly and efficiently.



## Value for Instructors

- Ensures safe training with enclosed high-voltage units and protective measures, preventing accidental injuries.
- Uses OEM automotive parts for an authentic and practical learning experience. Students gets real experience with all parts and functions exact as in real cars.
- Compact and on wheels for enhanced mobility and efficient use of classroom space. Durable and light construction from solid aluminum frame to make it long lasting and safe to use. Closed panels ensures students safety and internal wiring makes it safe to use and ensures accidental damage to sensitive training stand parts.
- Allows detailed demonstration of high-voltage battery operation, management, and diagnostic procedures.
- Mobile and space saving in the classroom, allows concurrent use by multiple students, promoting collaborative learning and practical training opportunities.
- The training stand is designed for simplicity, requiring only small adjustments to reset to default parameters, making it easy to prepare and start each lesson quickly and efficiently.



## Specifications

- Dimensions: 960 x 455 x 255 mm (37.80 in x 17.91 in x 10.04 in)
- Weight: 49 kg (108 lb)
- Power supply: 230 V (110 V)
- Battery type: Ni-MH battery pack with 168 cells (1.2 V each), nominal voltage 201.6 V
- Battery control features: current sensor, system main relay (SMR), battery ECU for monitoring and control
- Product number: HYBBAT01

